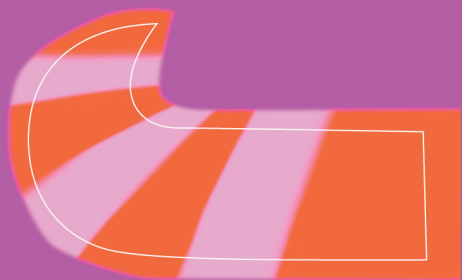




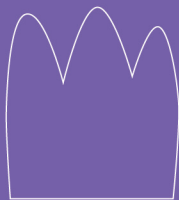
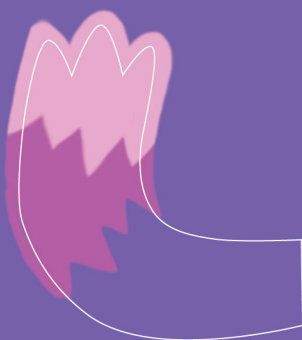
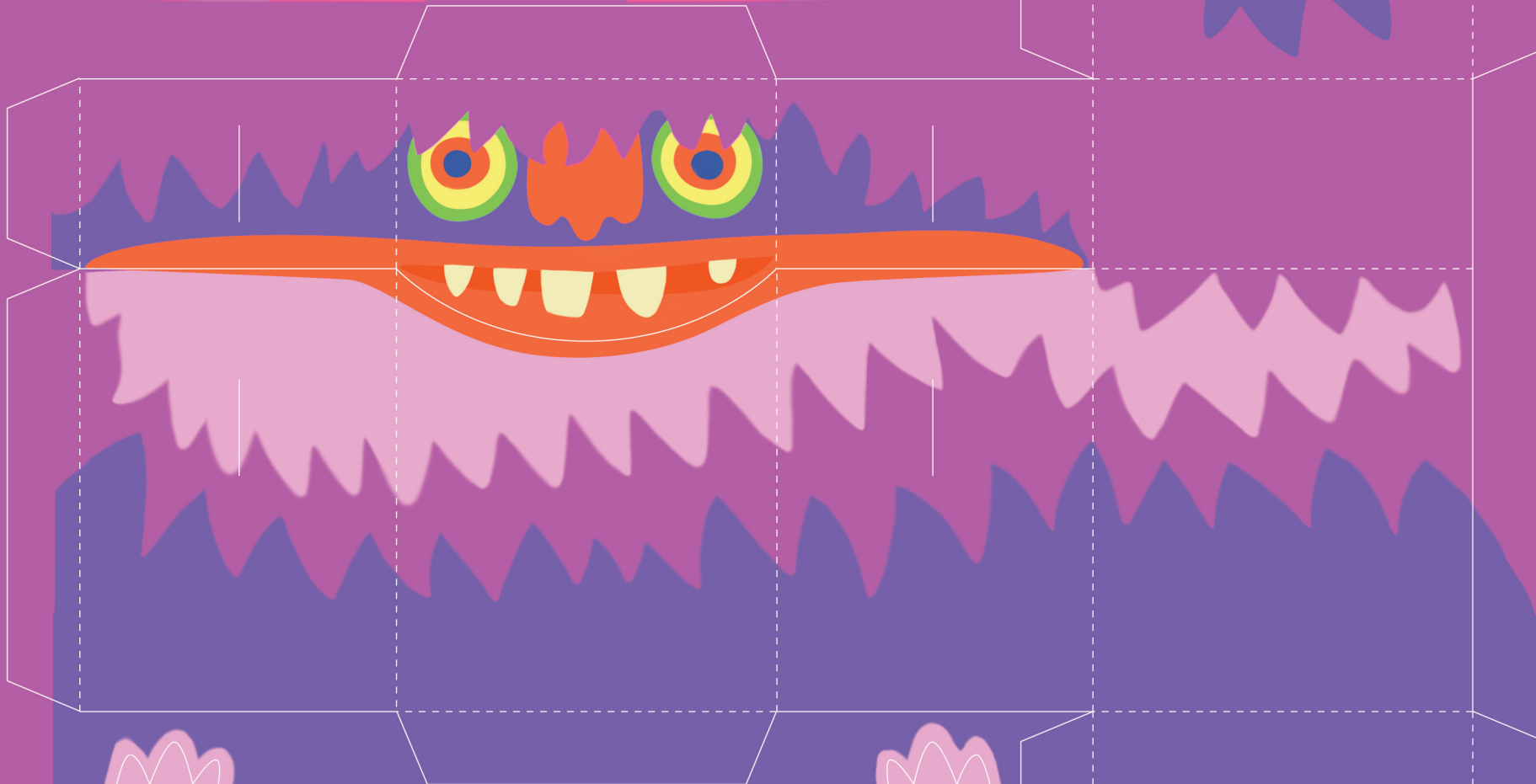
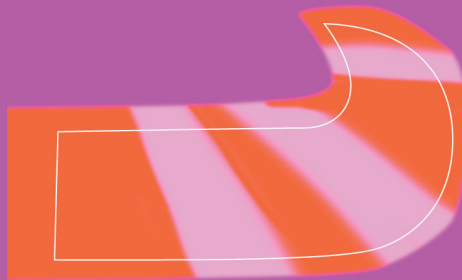
SCORE  
CUT



© 2013 Hallmark Licensing, LLC. All rights reserved.  
This template is for personal use only, not commercial use.



SCORE  
CUT



© 2013 Hallmark Licensing, LLC. All rights reserved.  
This template is for personal use only, not commercial use.

# Monster Treat Boxes

Crafter level: Easy to intermediate

Time needed: 20 minutes each

## What you'll need

To make three monster treat boxes (one of each):

- Color printer
- 3 sheets card stock
- White glue or glue stick
- Small, sharp scissors or craft knife



## How to make it

1. For each monster, print out one monster page on to card stock with your color printer.
2. Cut out body and all body parts along solid lines.
3. Carefully cut any slits (solid lines) on the body or head for all the appendages (arms, antennae, etc.)  
*Tip: Feet will be added to the bottom of the box so there are no solid lines to cut for those.*
4. Score and fold body along all dashed lines.
5. Form body into a box shape by glueing the folded tabs to the inside of the body using a glue stick or light coating of white glue. Make sure to align edges and corners as evenly as possible so he will stand straight up. Let dry.
6. Slide appendages into the slits on the body and head, using the picture as a reference if needed.
7. Glue feet to the underside of monster so that the toes peek out at his front.
8. Repeat steps 1 through 7 for the next two monsters.
9. Fill them with candy and give them to your own little monsters.

