

Beep-Box Robot

Crafter level: Easy

Time needed: 45 minutes

What you'll need

- Tall, empty box (such as a cereal box or oatmeal canister)
- Printouts of robot templates on card stock (for best results)
- Scissors or craft knife
- Paint, aluminum foil or gift wrap
- Tape (optional)
- White glue

How to make it

1. Cut out the all the pieces you want to use from the printouts.
2. Paint or wrap the box with aluminum foil or gift wrap in coordinating color such as silver, black, white or red.
3. Glue the head and body to 1 side of the box.
4. Cut an opening in the side or back of the box for valentines
Tip: To make a nice rectangular opening, cut a wide "X" shape, and then fold the points to the inside of the box and tape or glue down (see Diagram 1).
5. Now glue on the robot's eyes, arms, legs and any other attachments you want to add, and let dry. Add your name to one of the heart decorations for personalization. See the examples below for inspiration on decorating your own robot.

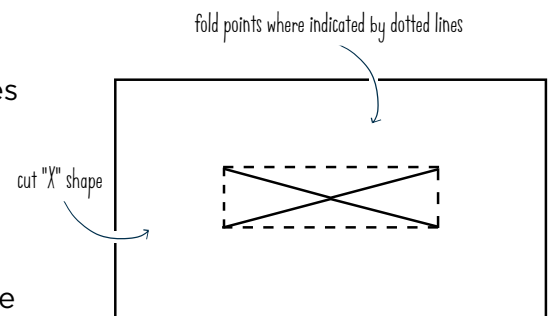
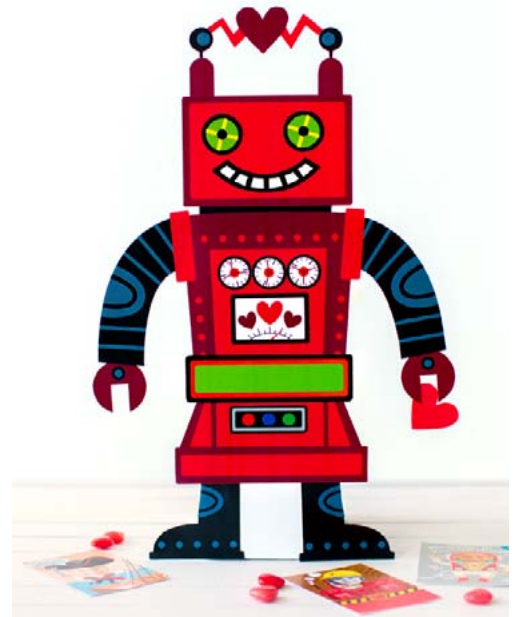
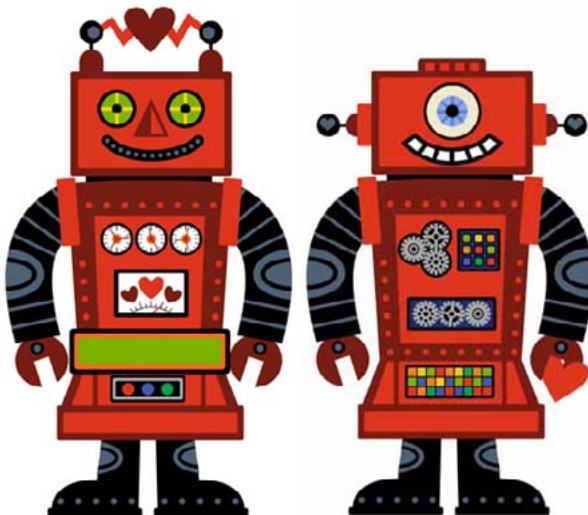


Diagram 1



Robot Templates

