

"I've Got Googly Eyes for You" Monster

Crafter level: Easy

Time needed: 45 minutes

What you'll need

- Tall, empty box (such as a cereal box or oatmeal canister)
- Printouts of monster templates on card stock (for best results)
- Scissors or craft knife
- Gift wrap and tape (optional)
- White glue

How to make it

1. Cut out the all the pieces you want to use from the printouts.
2. Wrap the box with gift wrap in coordinating color such as white or orange (optional), or use additional sheets of the background design page for all sides of the box.
3. Glue the body and head to 1 side of the box.
4. See the pictures below for inspiration on how to create the opening for your valentines. One fun option is to use the printout of the large mouth for a guide and cut a hole in the box. Then glue teeth all around the opening.
5. Now glue on the monster's hair, eyes, arms, feet and any other attachments you want to add, and let dry.

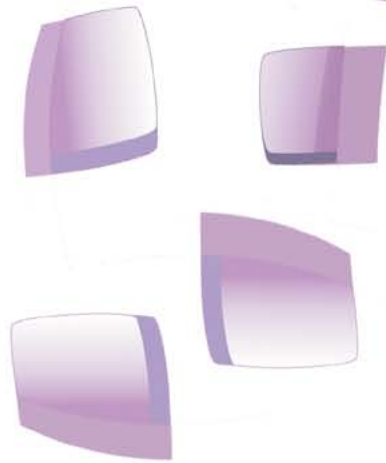
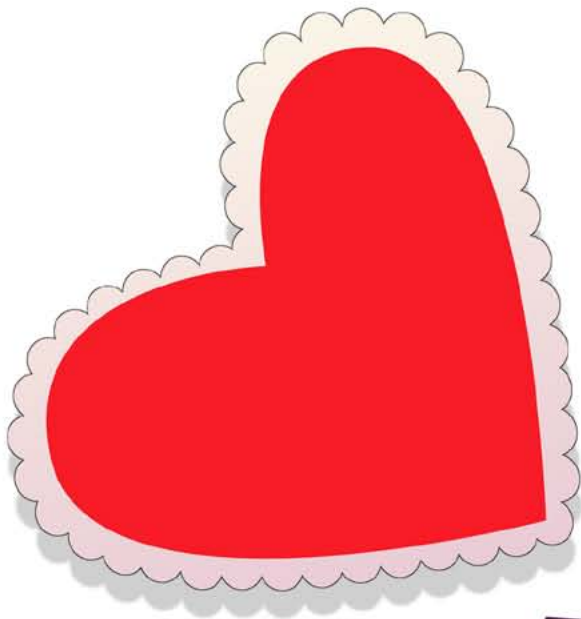
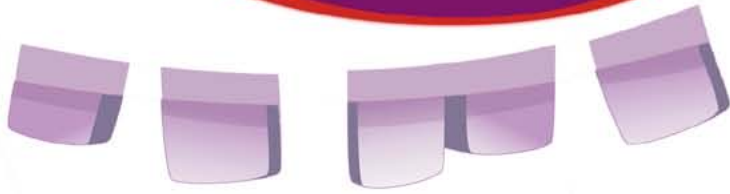


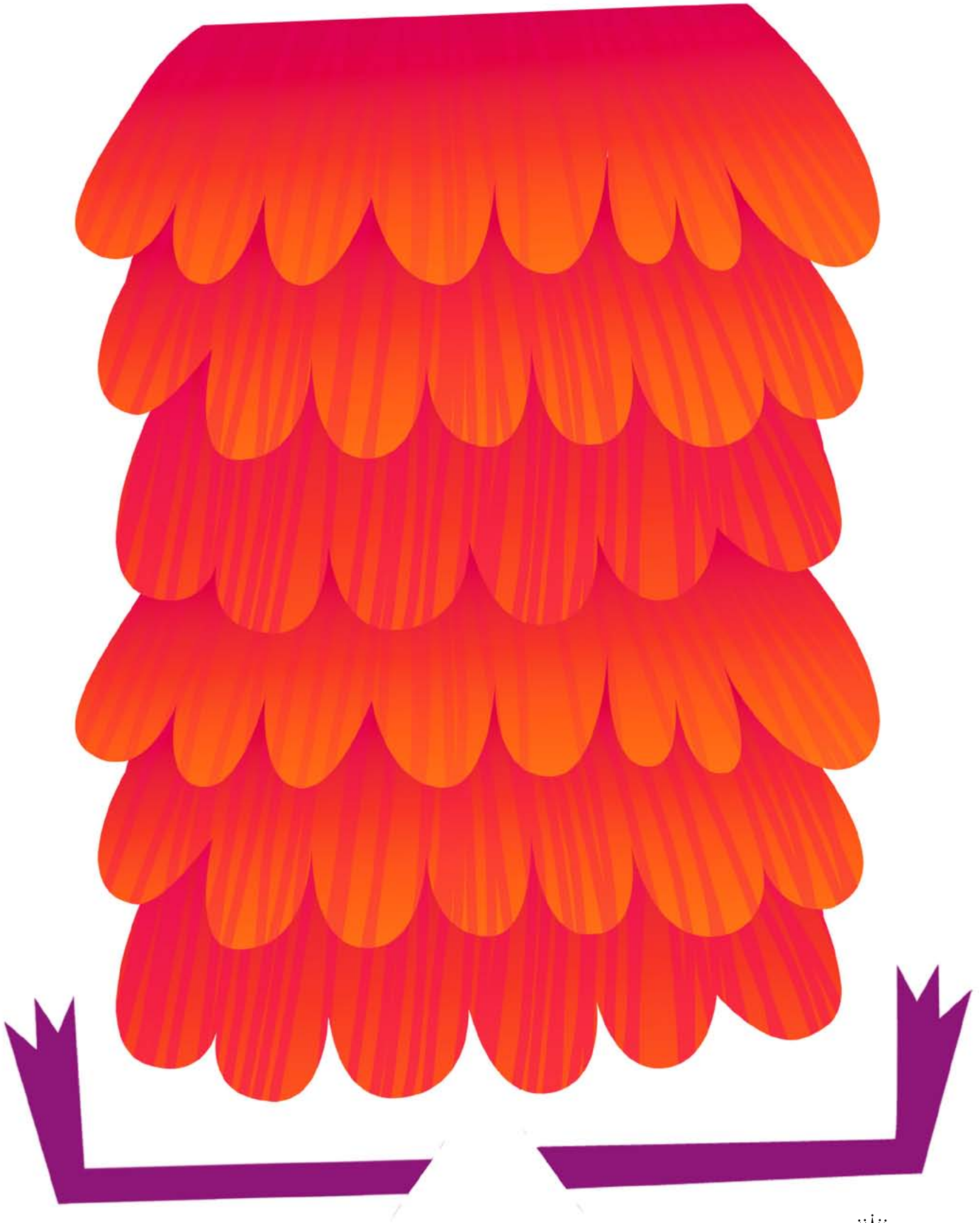
Create your own unique monster with these pieces and parts. You can glue the arms up or down, add your name to the heart shape for a personalized box, or use the opening of a tissue box for the mouth. Have fun!





Monster Templates





Monster Templates

