

# TABLETOP TREAT BASKET



## You'll need:

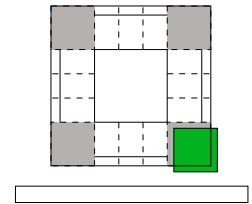
- greeting card  
(double-sided ones look great)
- about 30" of 5/8" ribbon
- about 12" of 1/4" ribbon
- scissors
- ruler
- pencil (or pen)
- white glue
- paper clips (optional)

## STEP 1

For your basket, cut a 5 1/2" square from the cover of your greeting card. Then from the leftover portion of the card, cut a 1 1/2" square and cut a strip 8" long and 9/16" wide (the strip is your basket handle).

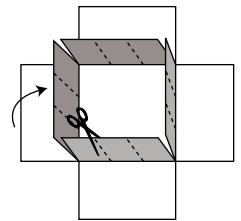
## STEP 2

Using the smaller square as a guide, place it on top of the larger square so the lower right corners line up with each other. Use your pencil to trace on the larger square around the two edges of the smaller square. Slide the smaller square off and then cut the larger square along your traced lines. Repeat for the other three corners of the larger square. That gives you the bottom and four sides of your basket. (It will look like a plus sign when you're done cutting.)



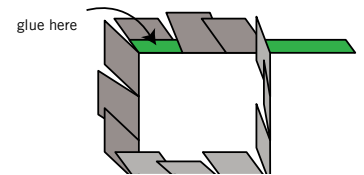
## STEP 3

With the designed side of the card face down, fold each side of your basket into the center. Then starting at the top of each basket side, cut toward the basket bottom to make three strips of equal width (each strip will be approximately 4/5" wide).



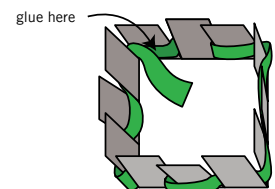
## STEP 4

Using the 5/8" ribbon, cut a piece 12" long and glue one end of it to the inside face of one of the side strips, with the bottom edge of the ribbon lined up with the edge of the basket bottom. Set aside to dry. Use paperclip to hold ribbon in place.



## STEP 5

Once the glue dries, weave the ribbon around the basket's side strips (make sure to alternate between them). When you have woven through all 12 strips, glue the ribbon on top of the end already glued to the basket. After it dries, cut off any extra ribbon and set it aside.



## TABLETOP TREAT BASKET *(continued)*

---

### STEP 6

Using the full length of the 1/4" ribbon, glue one end of it to the strip on the inside face of the adjacent side of the one you used to start the 5/8" ribbon. Position so that the top edge of the ribbon is about 5/16" below the top edge of the strip. Set aside to dry.

### STEP 7

Repeat Step 5 with the 1/4" ribbon.

### STEP 8

Snip fringes into the top edges of your basket sides. Bend them away from the basket's interior to make a decorative rim.

### STEP 9

To make your basket handle, cover both sides of your handle strip with the leftover 5/8" ribbon by gluing the ribbon to each side of the strip. When that's dry, glue one end of the handle on the inside of the center of one of your basket's sides. (Use a paper clip to keep the handle tight to the basket side while the glue dries.) Bend the handle to attach its other end to the opposite side of the basket.

### STEP 10

Take off the paper clips and fill your basket with decorative Easter grass, candy eggs or flower petals—whatever your guests will like!

